

KFC-6973

SERVICE MANUAL

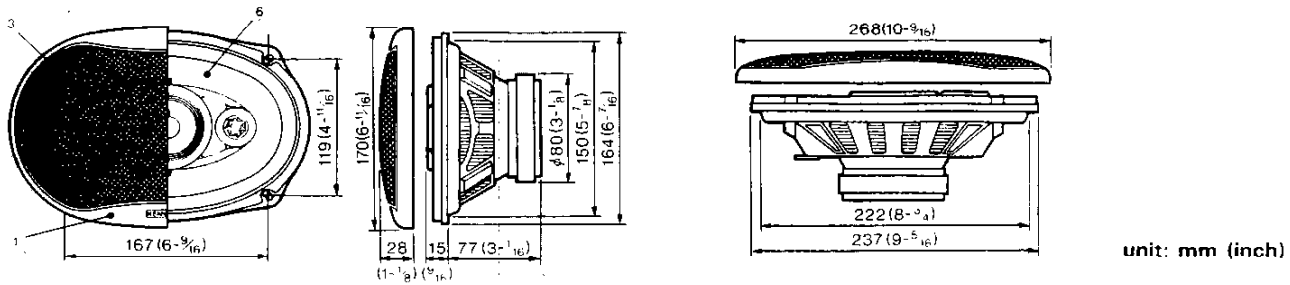
KENWOOD

Q.C.

COPY

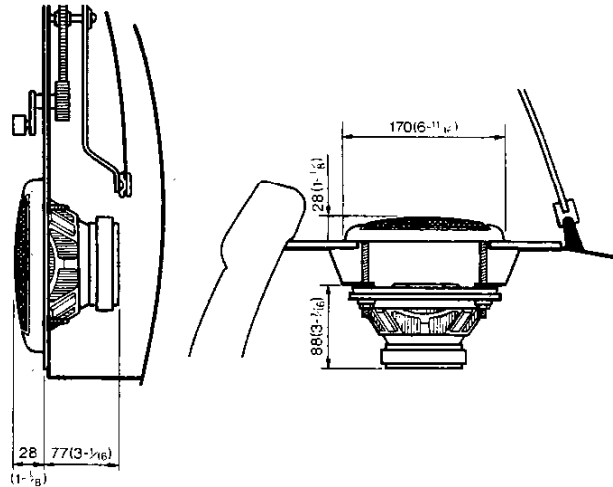
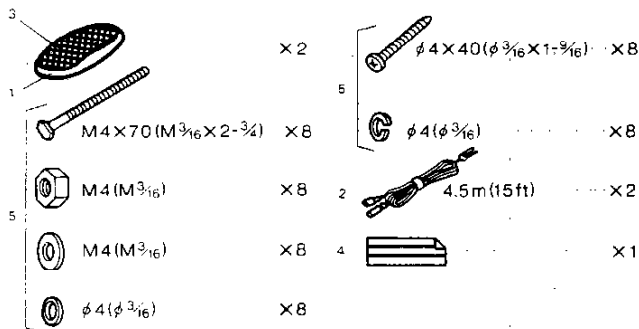
©1991-11 PRINTED IN JAPAN
B51-6396-00 (MC) 1517

EXTERNAL VIEW



unit: mm (inch)

PARTS INCLUDED



SPECIFICATIONS

Speakers

Woofer	-----	153 x 229mm (6 x 9in)	Water Resistant Cone Type, 280g (10oz) Magnet
Mid-Range	-----	φ 70mm (2-3/4in)	Water Resistant Cone Type.
Tweeter	-----	φ 20mm (1in)	Dome Type
Peak Power	-----	105Watts	
Frequency Response	-----	35 ~ 2,500Hz	
Sensitivity	-----	91dB/W at 1m	
Impedance	-----	4Ohms	
Weight Per Speaker with Grille	-----	2,620g (5.9lb)/Pair	

We follow a policy of advancements in development.
For this reason specifications may be changed without notice.

PARTS LIST

* New parts

Parts without **Parts No.** are not supplied.
Les articles non mentionnés dans le **Parts No.** ne sont pas fournis.
Teile ohne **Parts No.** werden nicht geliefert.

Ref. No.	New Parts	Parts No.	Description
①	*	B 06-0699-08	GILLE ASSY
②	*	E 30-5117-08	CORD SET
③	*	F 09-1038-08	PROTECTOR
④		J 69-0103-08	VISCOUS TAPE
⑤	*	N 99-1220-08	SCREW SET
⑥	*	T 15-0208-08	SPEAKER